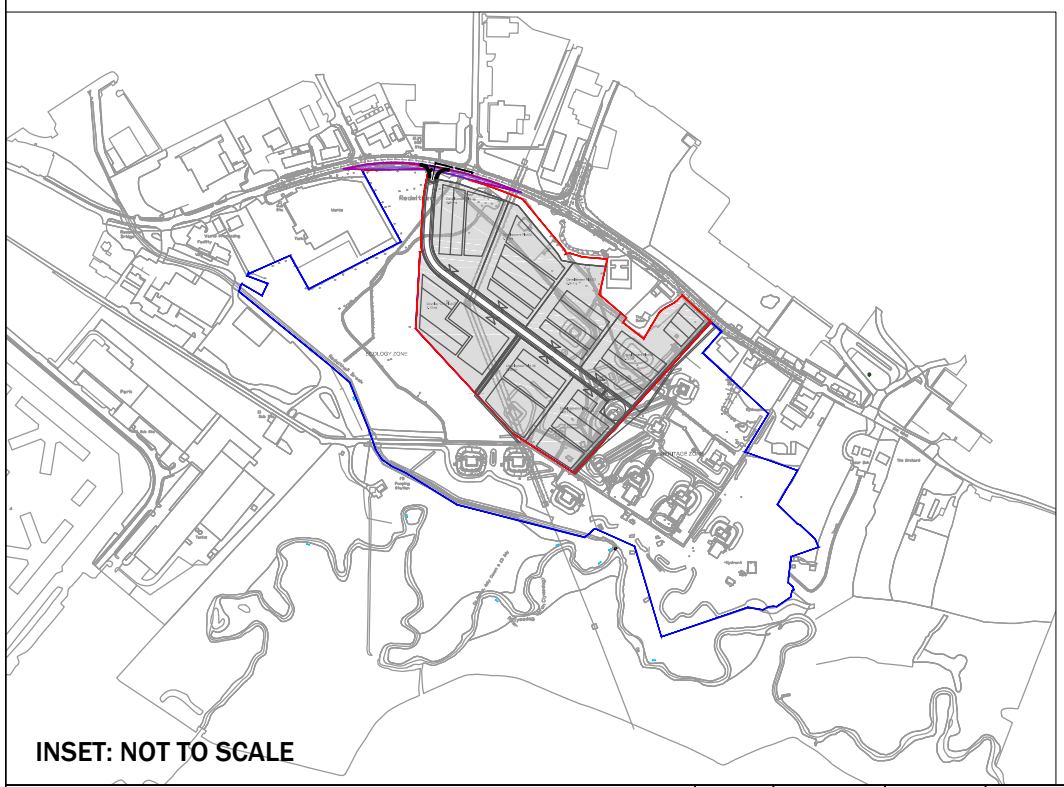
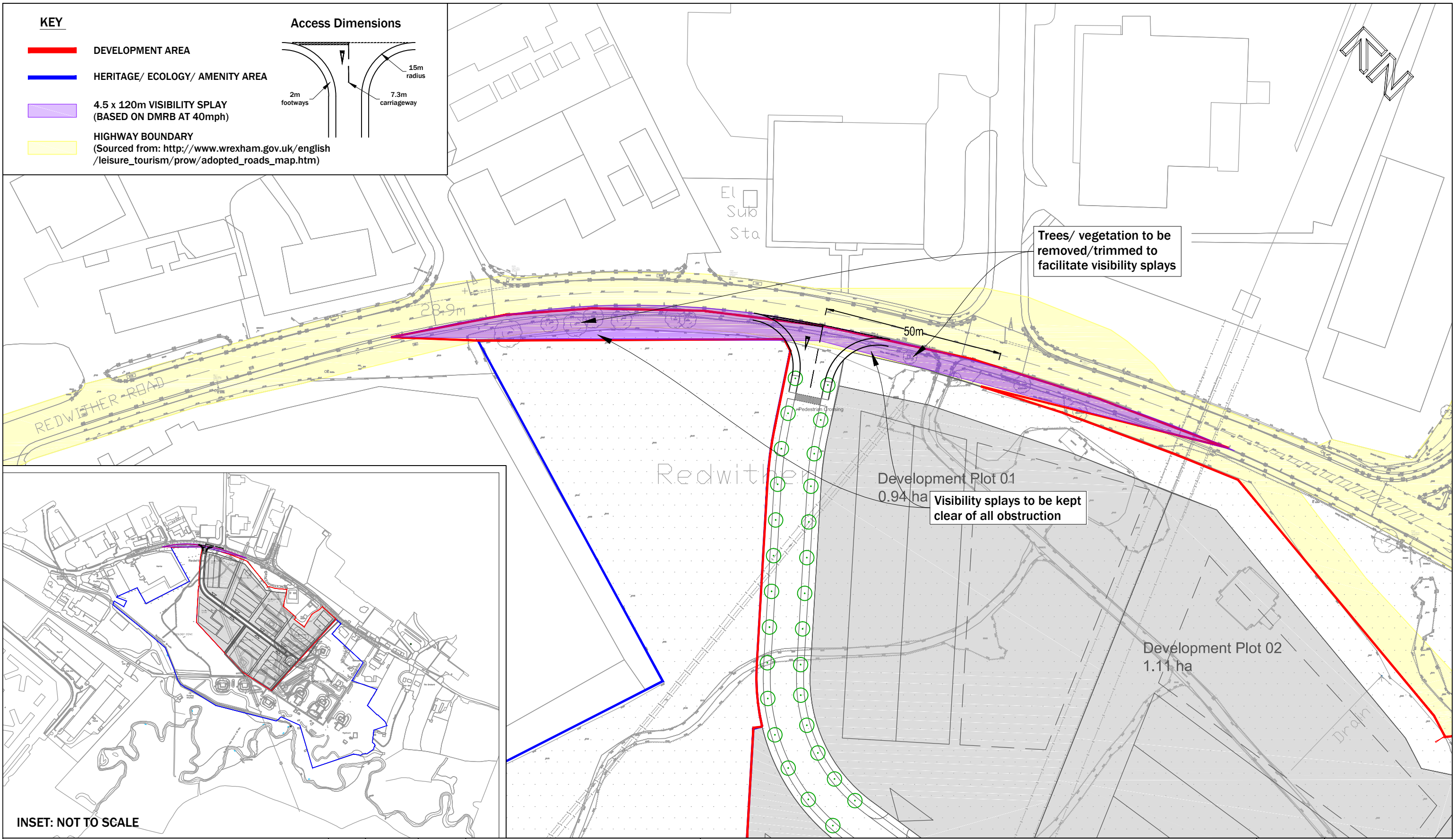
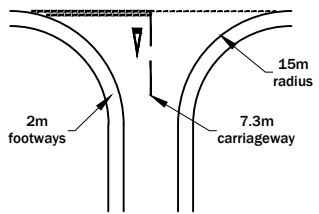


KEY

- █ DEVELOPMENT AREA
- █ HERITAGE/ ECOLOGY/ AMENITY AREA
- █ 4.5 x 120m VISIBILITY SPLAY (BASED ON DMRB AT 40mph)
- █ HIGHWAY BOUNDARY (Sourced from: http://www.wrexham.gov.uk/english/leisure_tourism/prow/adopted_road_map.htm)

Access Dimensions



INSET: NOT TO SCALE



9 Hurricane Court
Liverpool International Business Park | Estuary Boulevard | Liverpool | L24 8RL
www.primetp.co.uk | 0151 728 1860

Rev	Date	By	Revision notes
C	20.05.19	VB	UPDATED TO MASTERPLAN REV F
B	19.03.19	VB	TOPO ADDED
A	28.02.19	VB	SITE BOUNDARY DWG ADDED
Status			FINAL

Project	THE OAKS, WREXHAM INDUSTRIAL ESTATE
Title	PROPOSED ACCESS STRATEGY

Drawn by	Issue date
VB	28 FEB 2019
Scale(s)	1:1000 @A3
Drawing No	P19014-001C